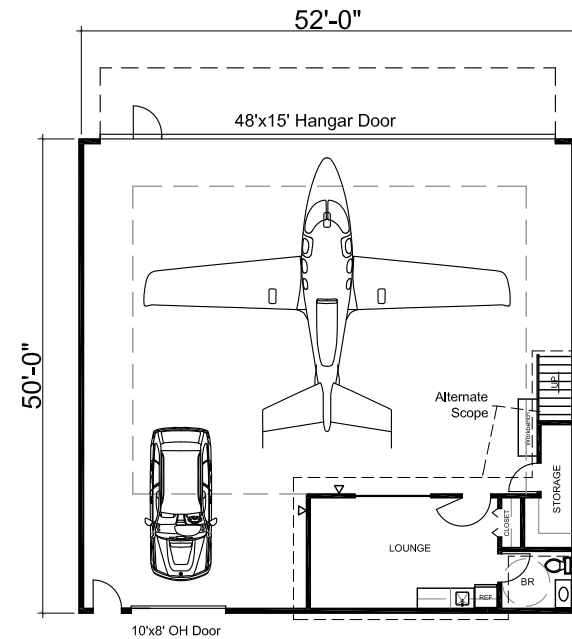
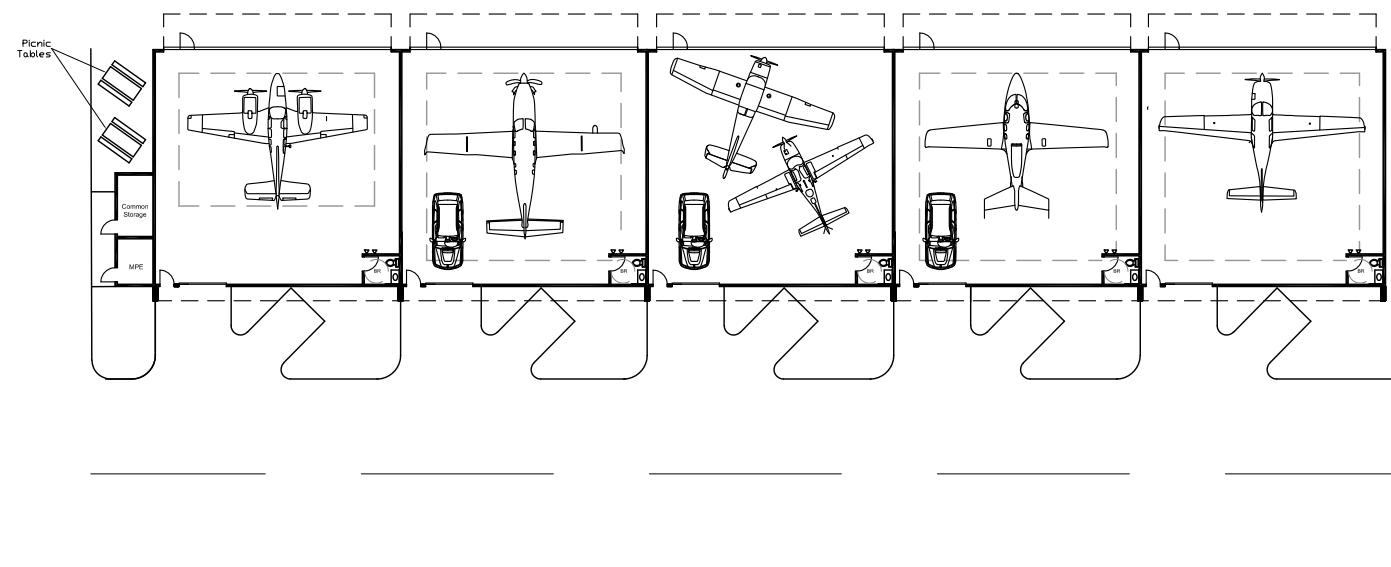
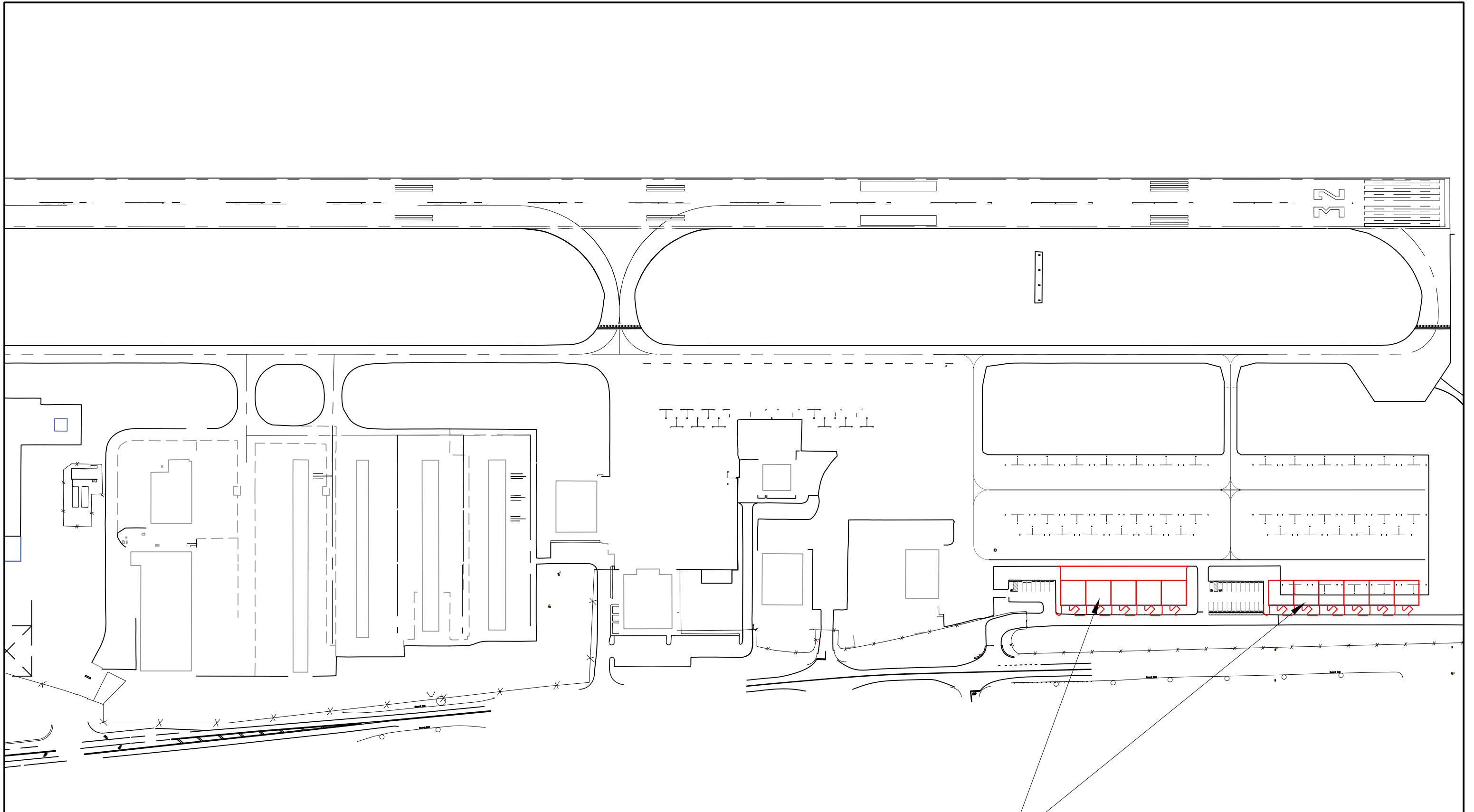


Winchester, Virginia Regional Airport General Aviation Hangar Condominium Project Hangars SE Side - Concept Design

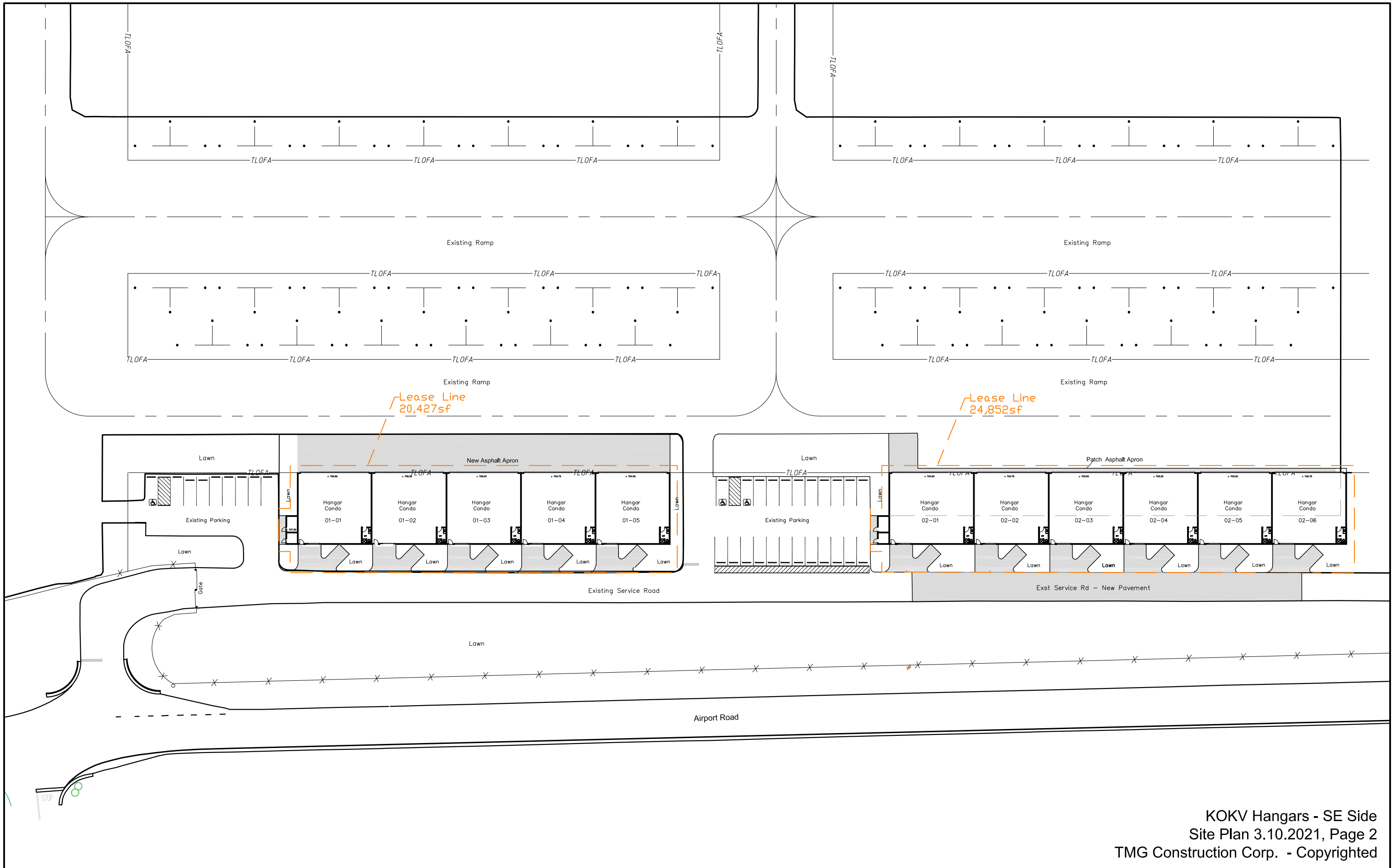


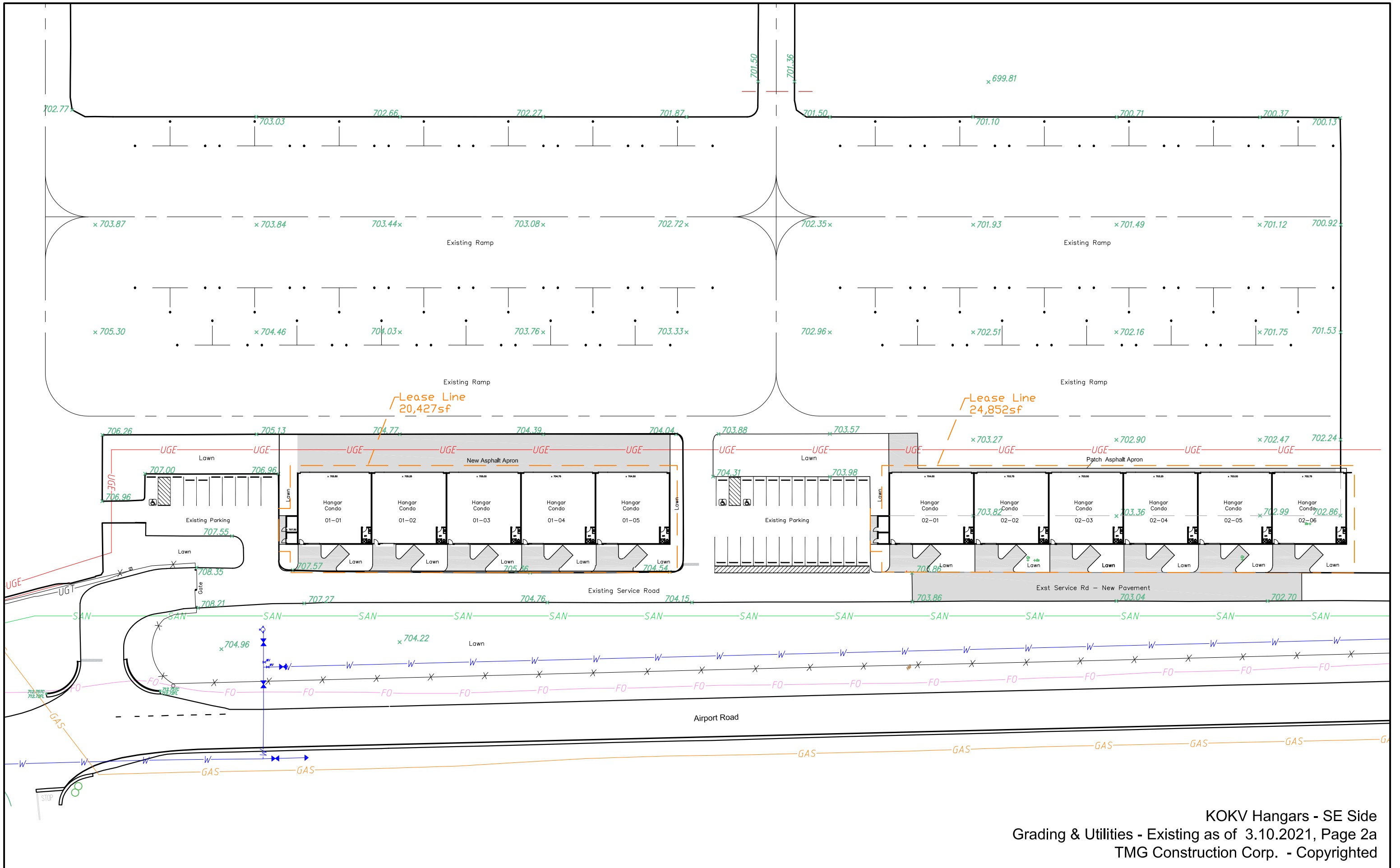
Page	Page Description	Rev Date
Cover	Cover Page	3.10.2021
Page 1	KOKV Hangars - SE Side, Location Concept Plan	3.10.2021
Page 2	KOKV Hangars - SE Side, Site Plan	3.10.2021
Page 2a	KOKV Hangars - SE Side, Grading and Utility Plan	3.10.2021
Page 3	KOKV Hangars - SE Side, Building #1 Concept Design	3.10.2021
Page 3a	KOKV Hangars - SE Side, Building #2 Concept Design	3.10.2021
Page 4	KOKV Hangars - SE Side, Interior BASE OPTION, 52'x50'	3.10.2021
Page 5	KOKV Hangars - SE Side, Interior Option #1, 52'x50'	3.10.2021
Page 6	KOKV Hangars - SE Side, Interior Option #2, 52'x50'	3.10.2021
Page 7	KOKV Hangars - SE Side, Interior Option #3, 60'x50'	3.10.2021

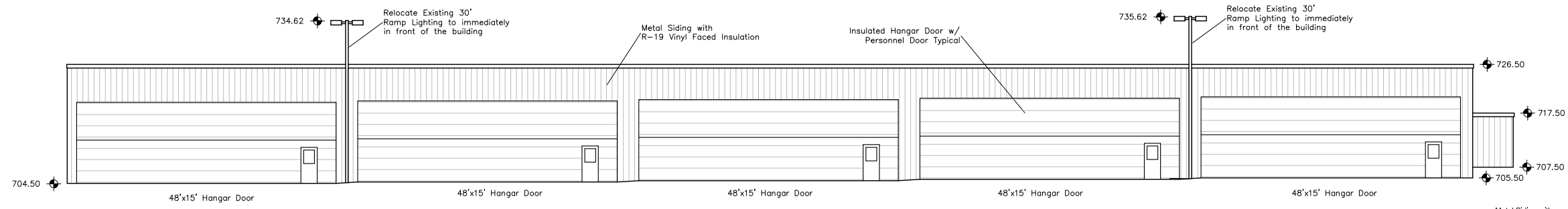




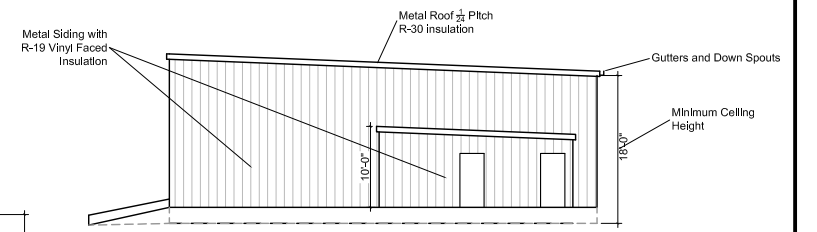
Proposed Location of eleven 50' deep hangars



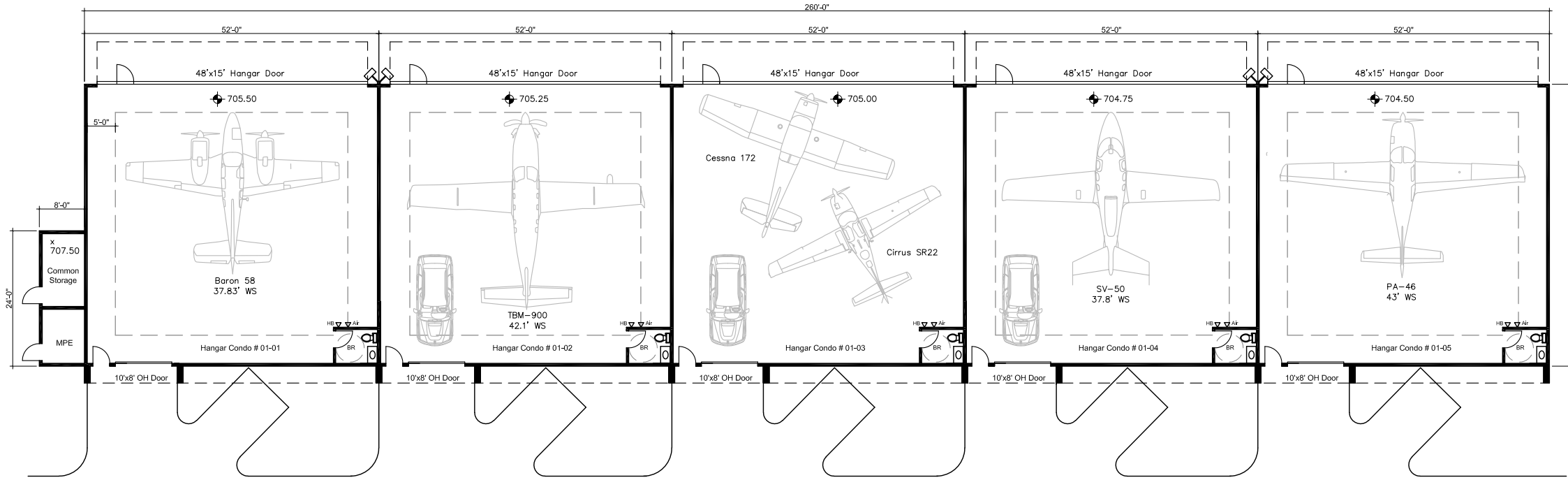




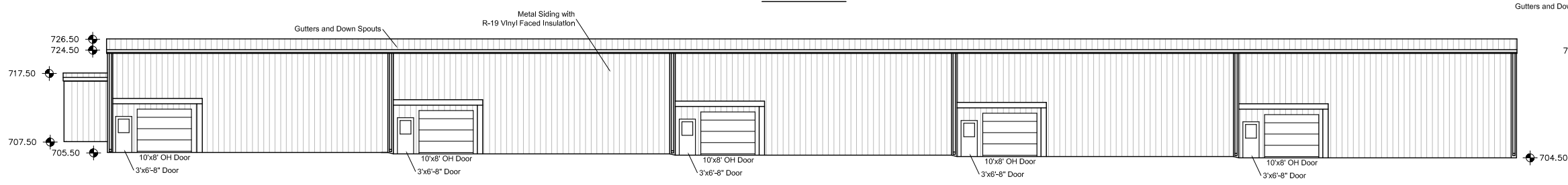
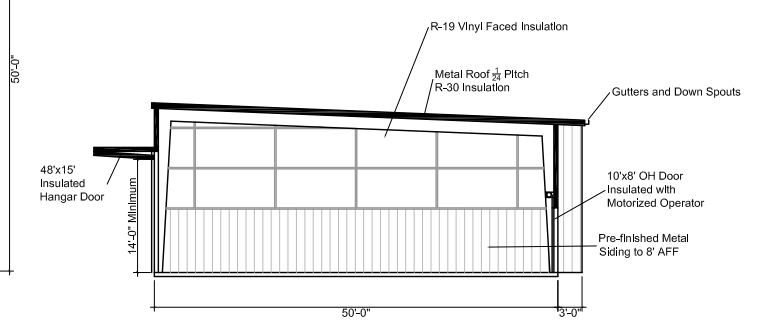
Elevation - Air Side



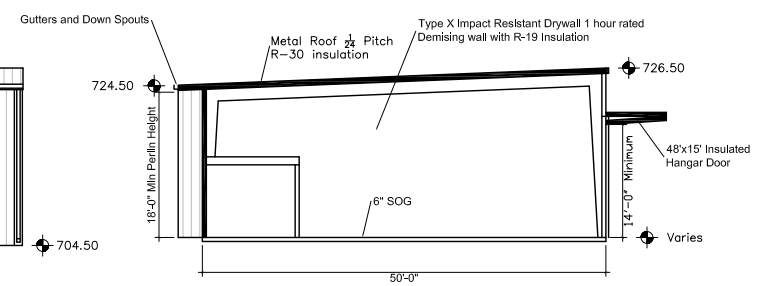
Elevation - Typical Side

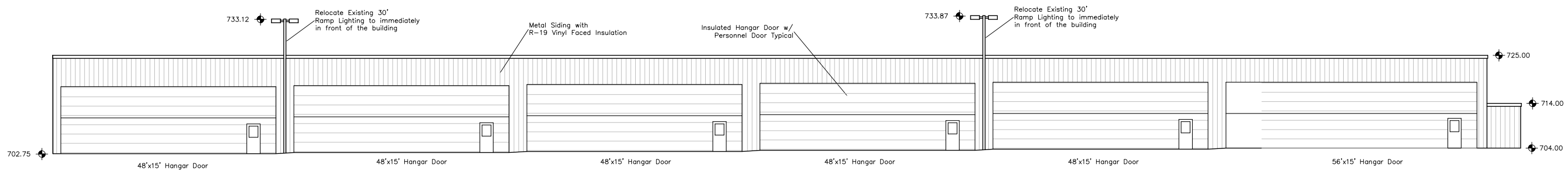


Plan View

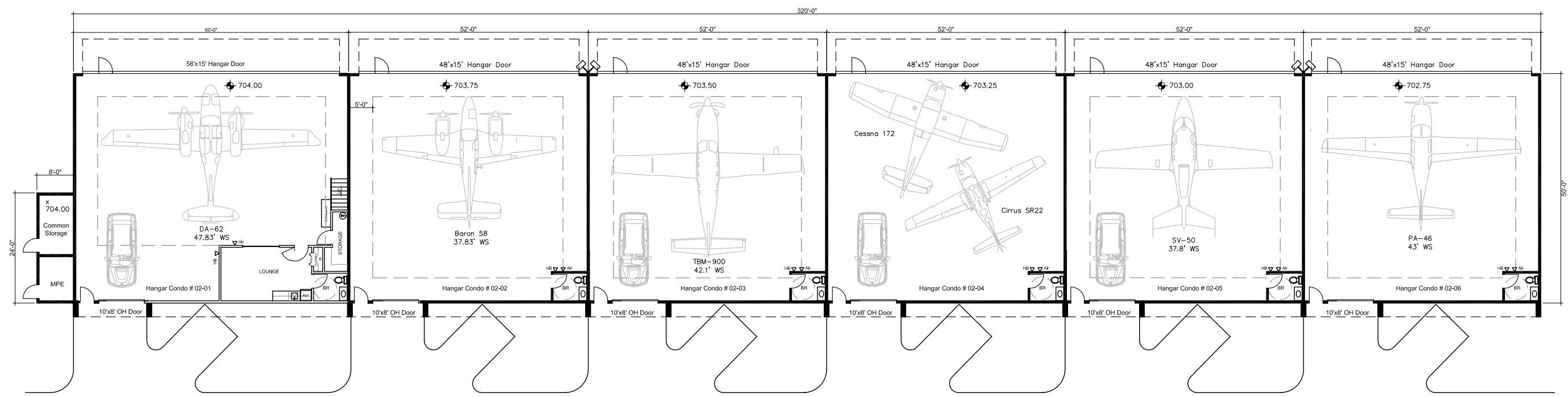


Elevation - Land Side

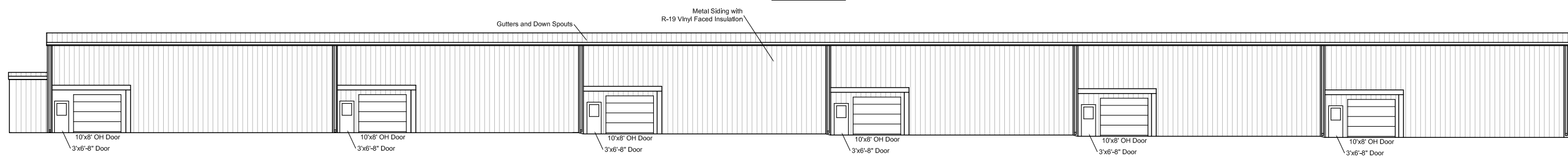




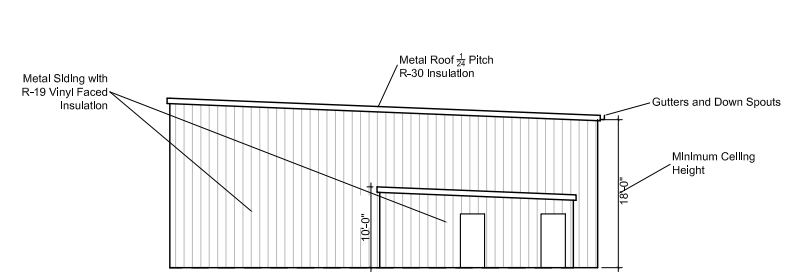
Elevation - Air Side



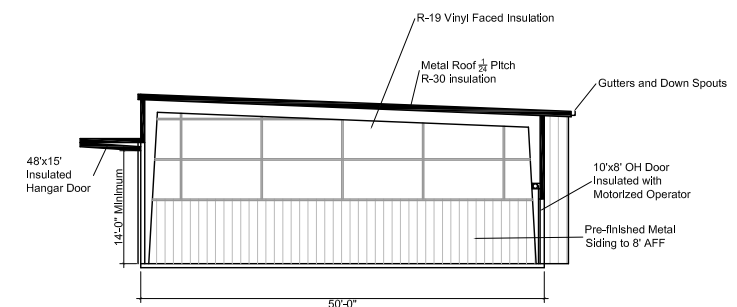
Plan View



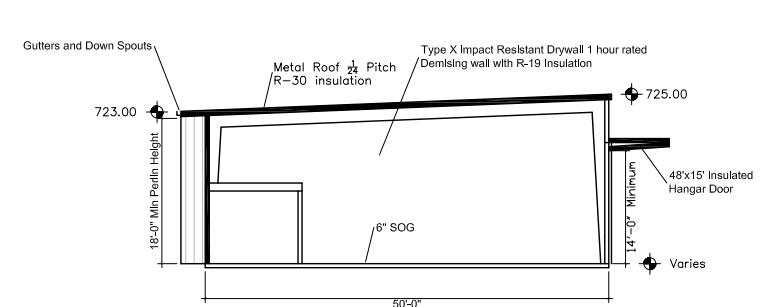
Elevation - Land Side



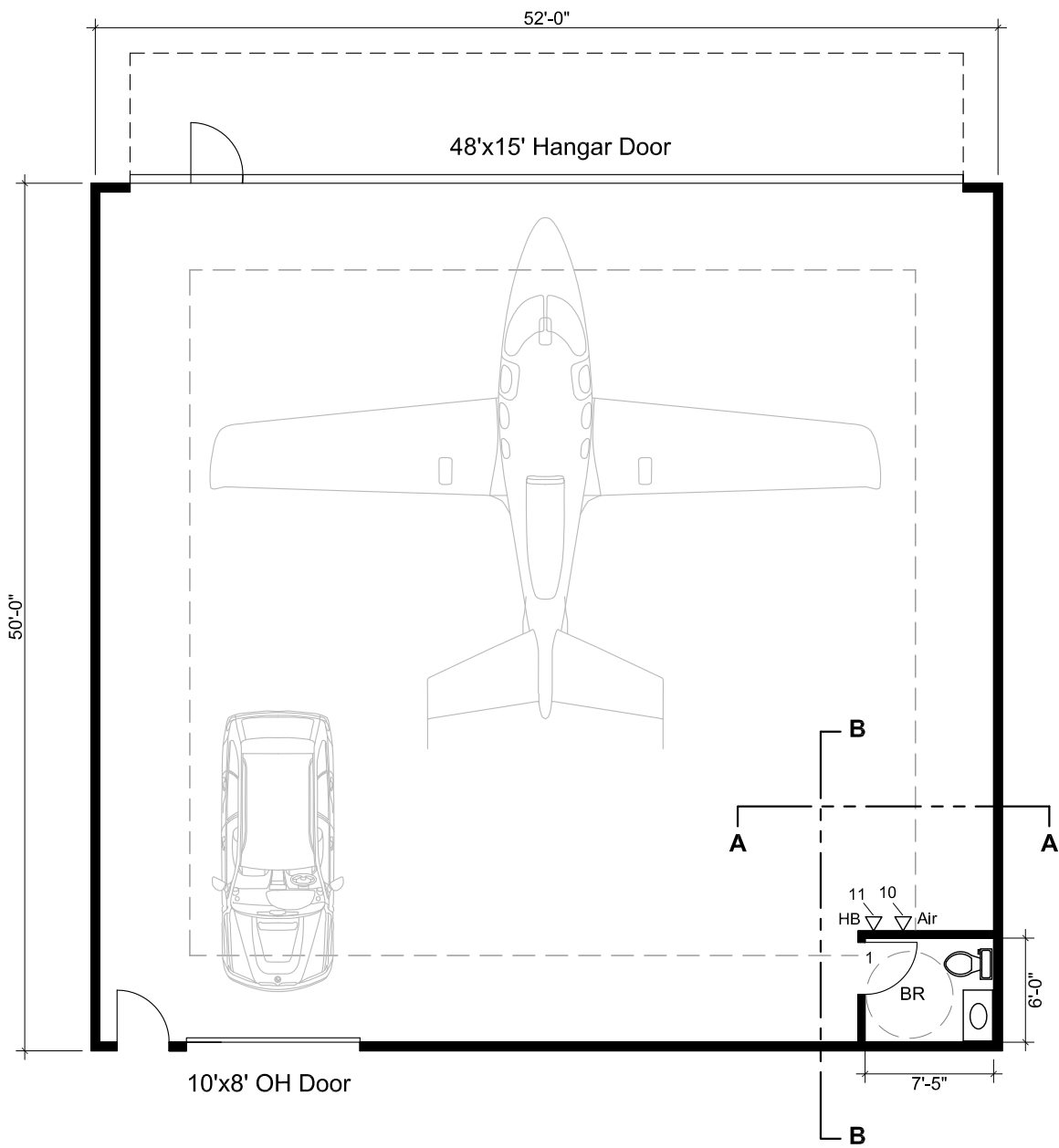
Elevation - Typical Side



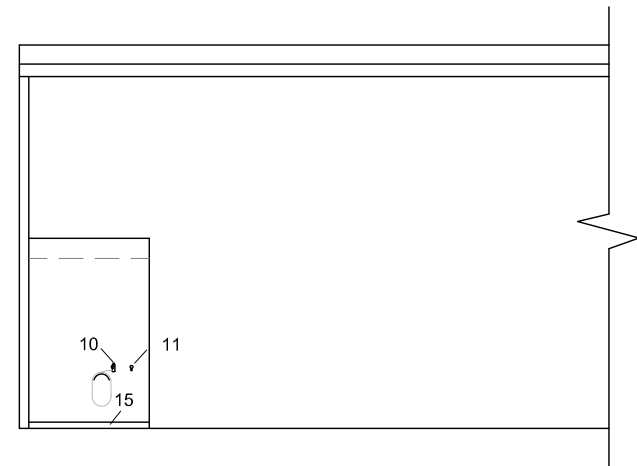
Typical Section @ Ext Wall



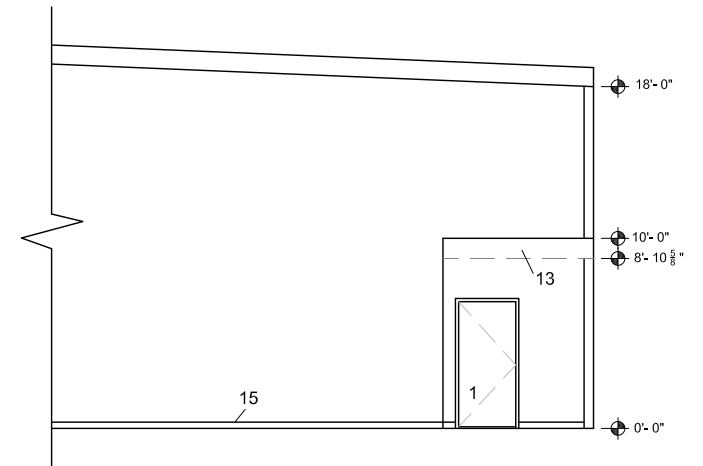
Interior Typical Section



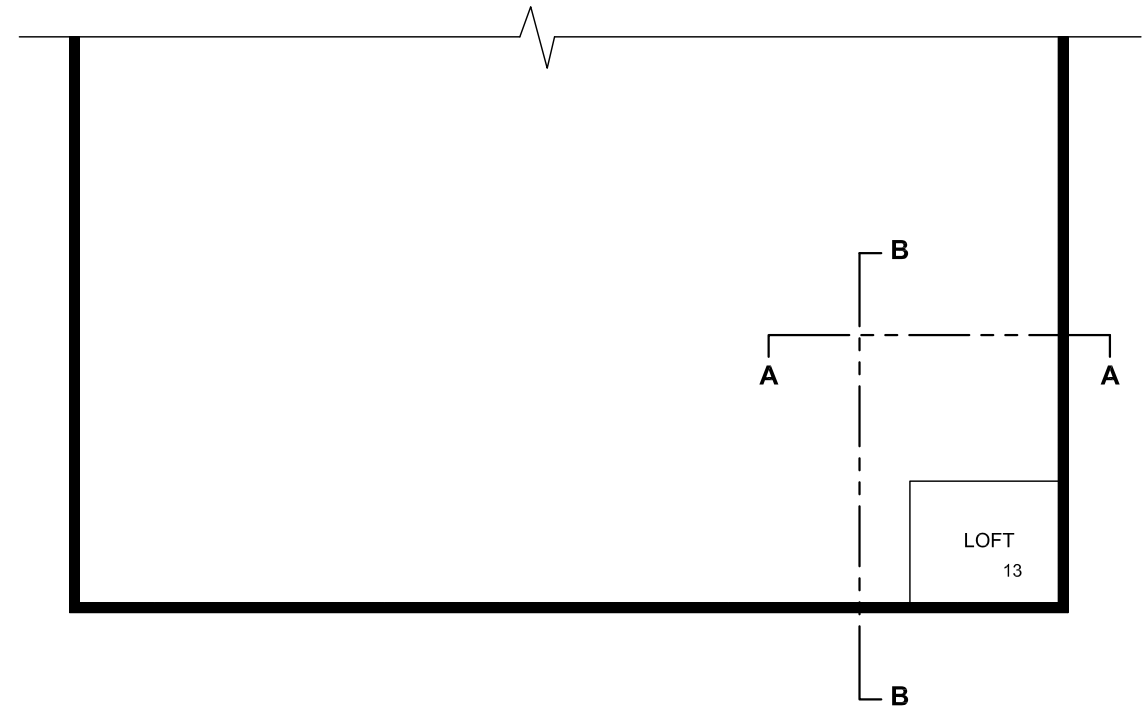
1st Floor Plan



Elevation AA



Section BB

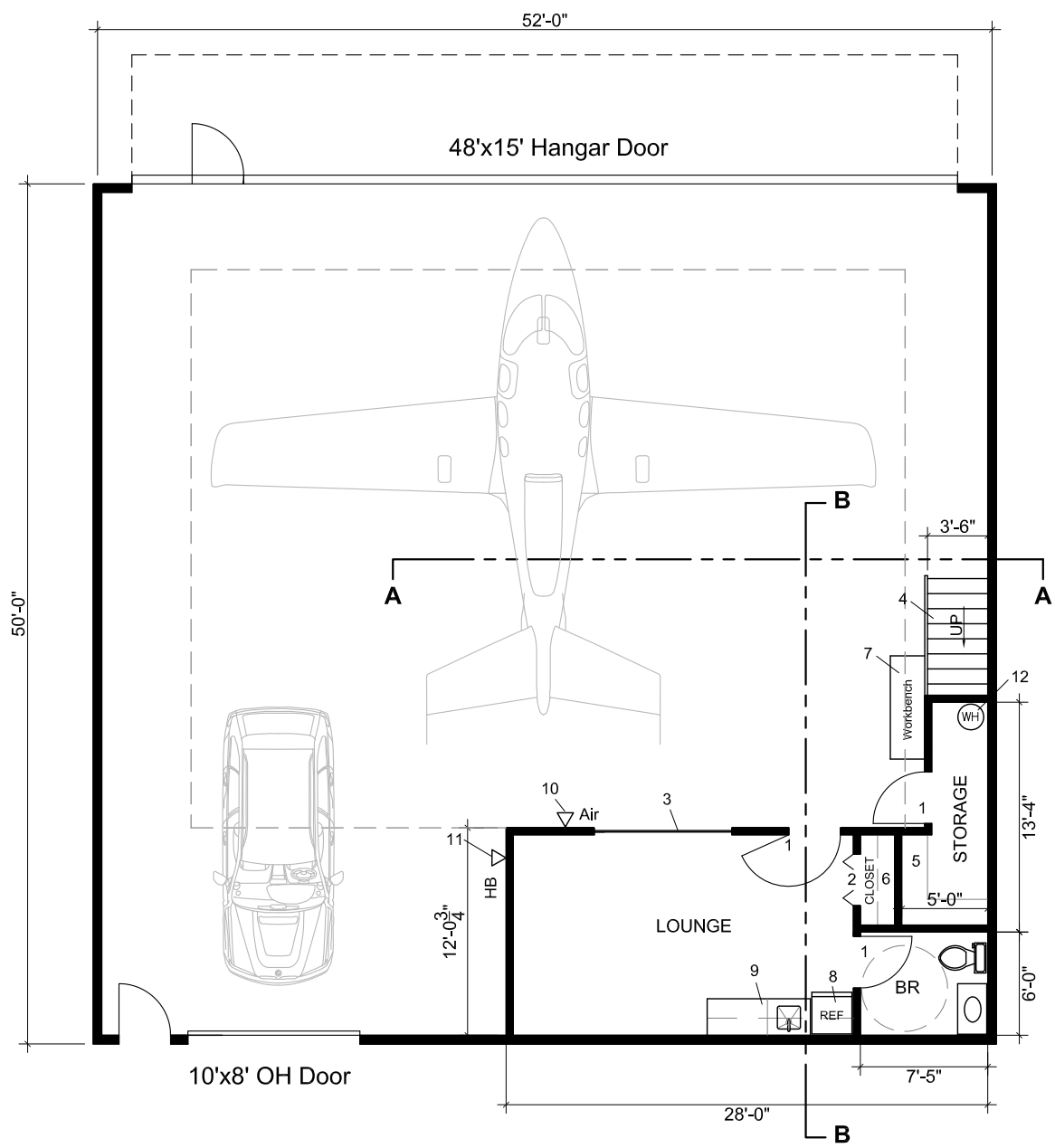


2nd Floor Plan (partial)

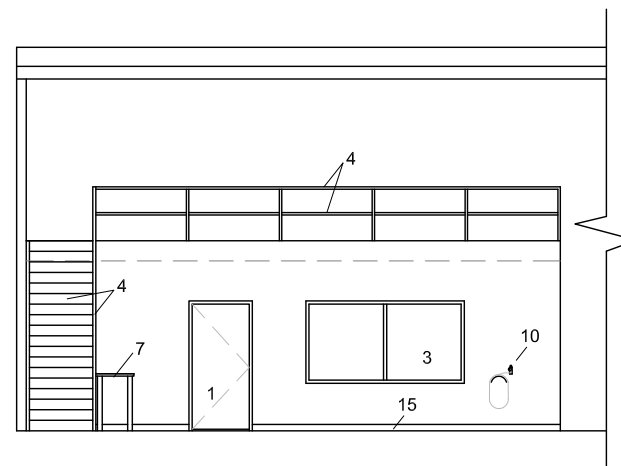
Page Notes:

- 1 3' x 6'-8" HM Frame, Wood Door
 - 2 3"x 6"-8" HM Frame, Bi-fold Wood Door
 - 3 8' x 4' Window - HM Frame w/ 1/4" Glass
 - 4 42" wide Misc Metal Pan Stair w/ Concrete CIP Treads and 1 1/2" Pipe Hand Rail
 - 5 84" H Wire Shelving - 5 Shelves
 - 6 12" Coat Shelf and Rod
 - 7 72" x 24" Maple top Workbench
 - 8 30" SS Refrigerator
 - 9 60" of Base and 90" of Wall Cabinets with Corian Top w/ 16"x16"x8" Sink
 - 10 Air Regulator / Compressed Air Outlet
 - 11 Hose Bib
 - 12 30 Gallon Electric Water Heater
 - 13 12" Joist, R11 Insulation, 3/4" CDX and Painted 5/8" DW Ceilings
 - 14 Painted 5/8" DW Ceiling on DW Grid
 - 15 4" Vinyl Base (Typical)
- 3 5/8" Metal Studs, R11 Batt Insulation
 5/8" Drywall Painted Partition

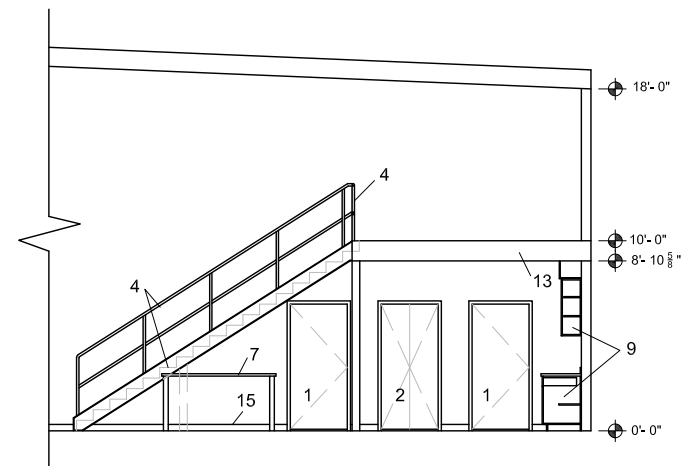
Interior - Base Option



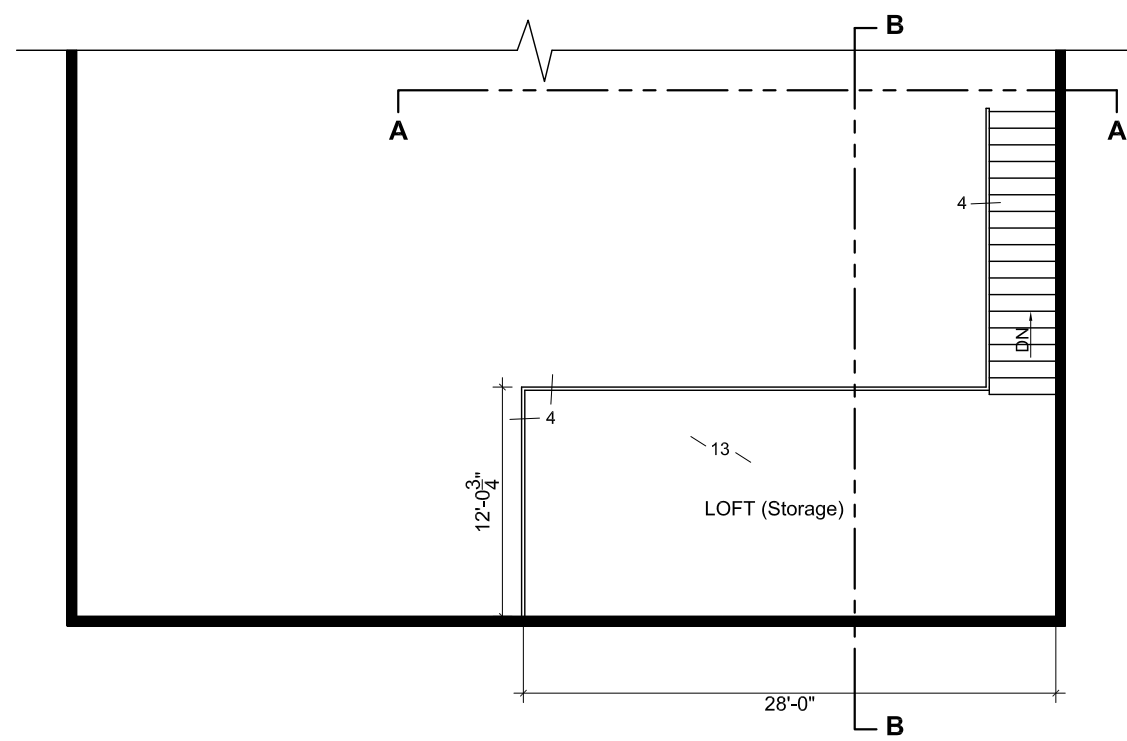
1st Floor Plan



Elevation AA



Section BB

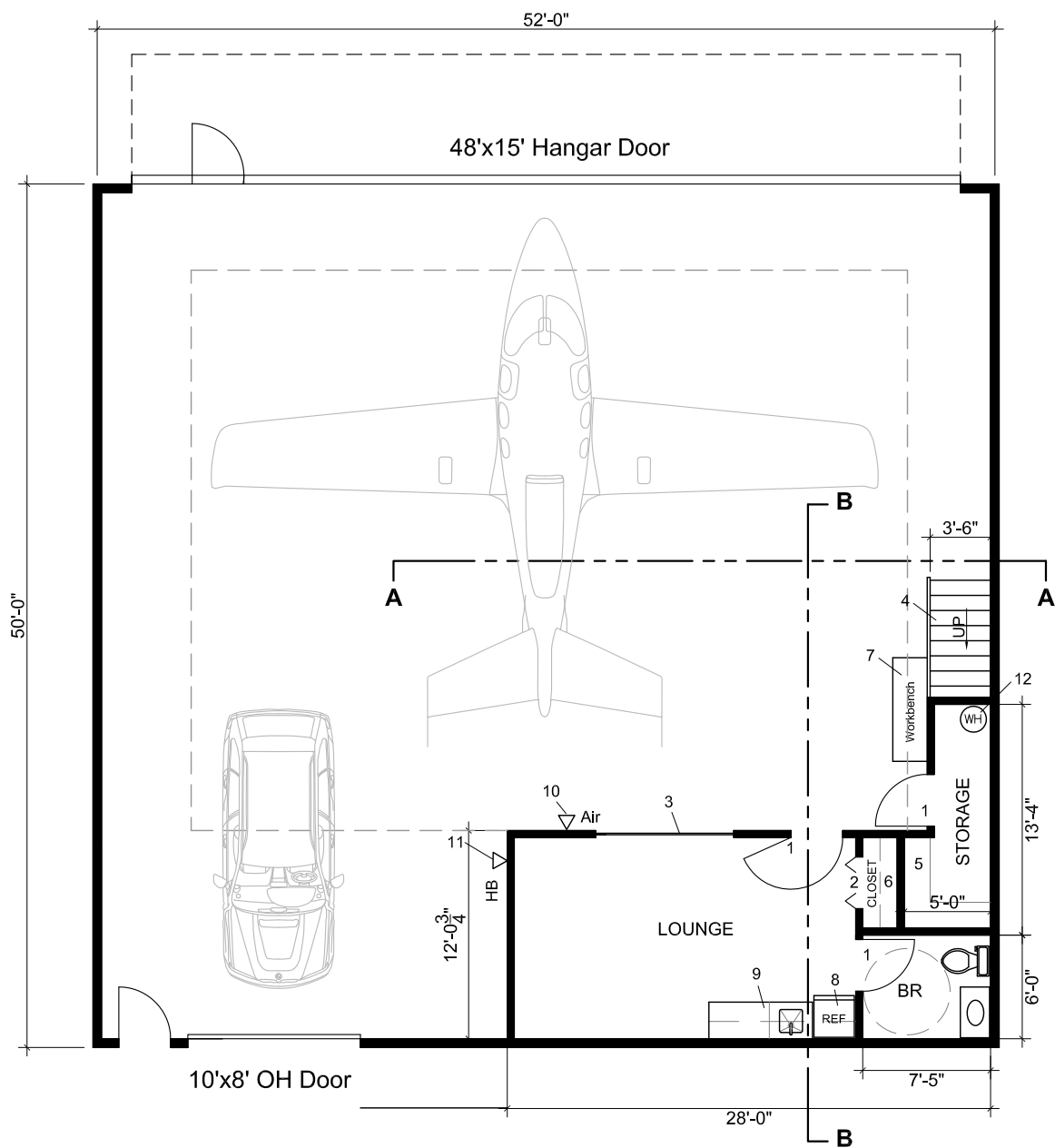


2nd Floor Plan (partial)

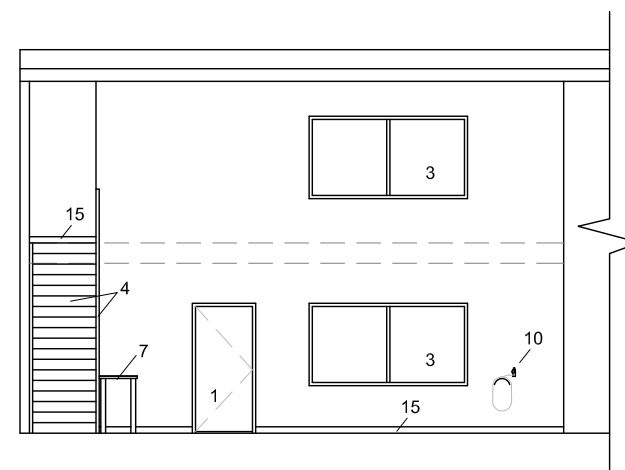
Page Notes:

- 1 3' x 6'-8" HM Frame, Wood Door
 - 2 3'x 6"-8" HM Frame, Bi-fold Wood Door
 - 3 8' x 4' Window - HM Frame w/ 1/4" Glass
 - 4 42" wide Misc Metal Pan Stair w/ Concrete CIP Treads and 1 1/2" Pipe Hand Rail
 - 5 84" H Wire Shelving - 5 Shelves
 - 6 12" Coat Shelf and Rod
 - 7 72" x 24" Maple top Workbench
 - 8 30" SS Refrigerator
 - 9 60" of Base and 90" of Wall Cabinets with Corian Top w/ 16"x16"x8" Sink
 - 10 Air Regulator / Compressed Air Outlet
 - 11 Hose Bib
 - 12 30 Gallon Electric Water Heater
 - 13 12" Joist, R11 Insulation, 3/4" CDX and Painted 5/8" DW Ceilings
 - 14 Painted 5/8" DW Ceiling on DW Grid
 - 15 4" Vinyl Base (Typical)
- 3/8" Metal Studs, R11 Batt Insulation
 5/8" Drywall Painted Partition

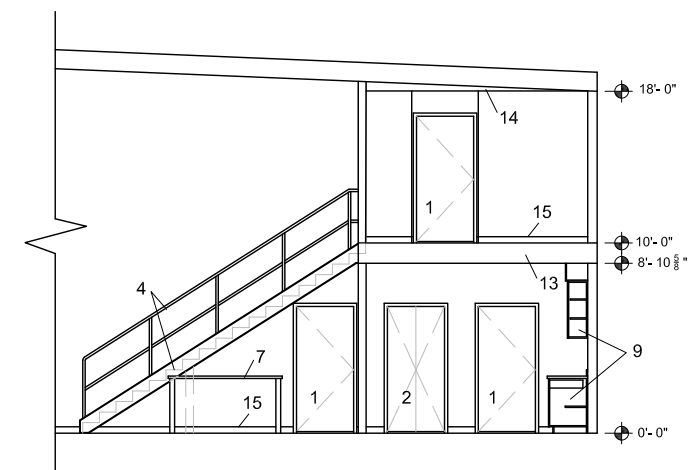
Interior Option #1



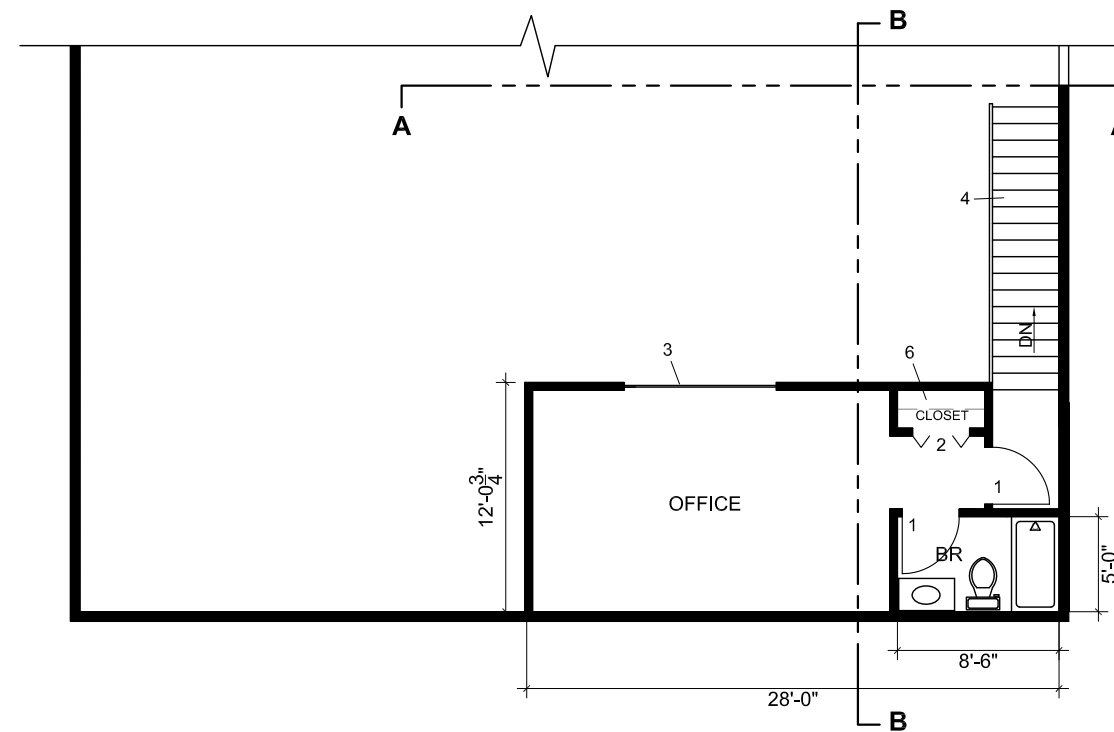
1st Floor Plan



Elevation AA



Section BB

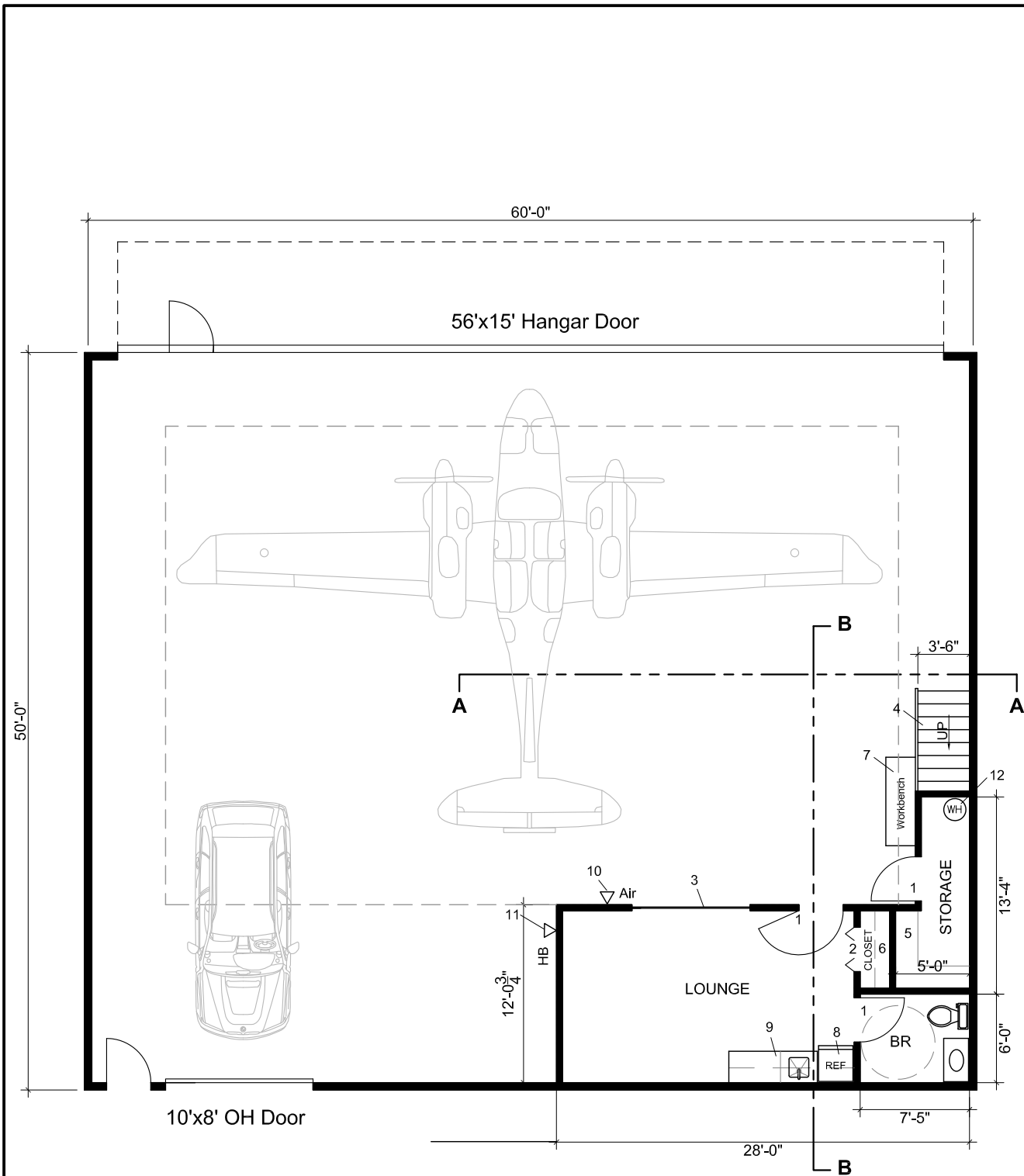


2nd Floor Plan (partial)

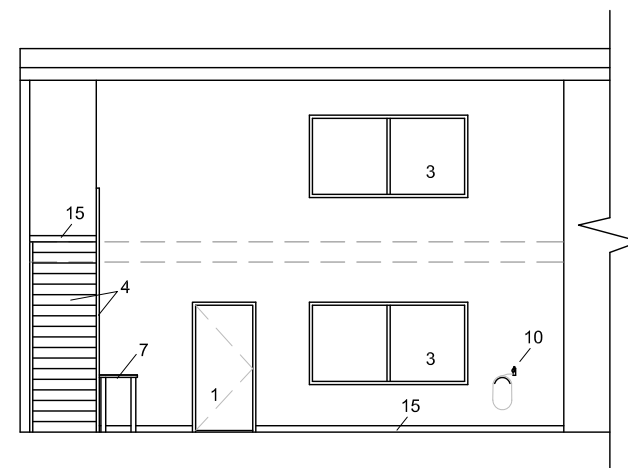
Page Notes:

- 1 3' x 6'-8" HM Frame, Wood Door
 - 2 3'x 6"-8" HM Frame, Bi-fold Wood Door
 - 3 8' x 4' Window - HM Frame w/ 1/4" Glass
 - 4 42" wide Misc Metal Pan Stair w/ Concrete CIP Treads and 1 1/2" Pipe Hand Rail
 - 5 84" H Wire Shelving - 5 Shelves
 - 6 12" Coat Shelf and Rod
 - 7 72" x 24" Maple top Workbench
 - 8 30" SS Refrigerator
 - 9 60" of Base and 90" of Wall Cabinets with Corian Top w/ 16"x16"x8" Sink
 - 10 Air Regulator / Compressed Air Outlet
 - 11 Hose Bib
 - 12 30 Gallon Electric Water Heater
 - 13 12" Joist, R11 Insulation, 3/4" CDX and Painted 5/8" DW Ceilings
 - 14 Painted 5/8" DW Ceiling on DW Grid
 - 15 4" Vinyl Base (Typical)
- 3/8" Metal Studs, R11 Batt Insulation
 5/8" Drywall Painted Partition

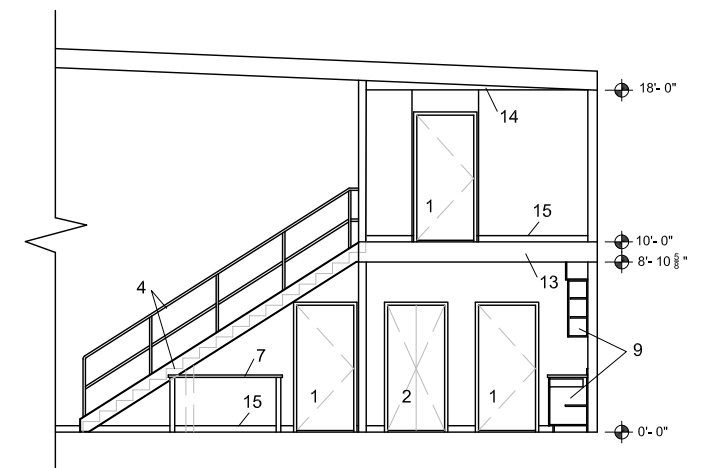
Interior Option #2



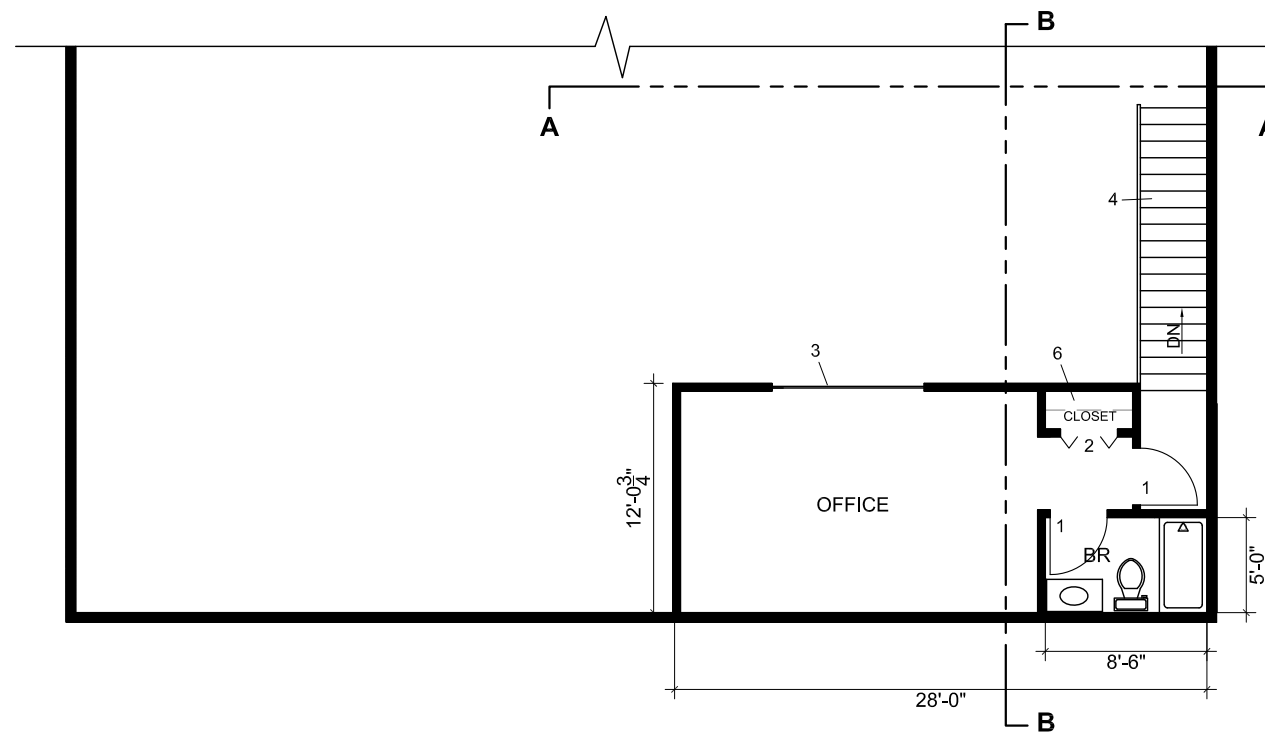
1st Floor Plan



Elevation AA



Section BB



2nd Floor Plan (partial)

Page Notes:

- 1 3' x 6'-8" HM Frame, Wood Door
- 2 3'x 6"-8" HM Frame, Bi-fold Wood Door
- 3 8' x 4' Window - HM Frame w/ 1/4" Glass
- 4 42" wide Misc Metal Pan Stair w/ Concrete CIP Treads and 1 1/2" Pipe Hand Rail
- 5 84" H Wire Shelving - 5 Shelves
- 6 12" Coat Shelf and Rod
- 7 72" x 24" Maple top Workbench
- 8 30" SS Refrigerator
- 9 60" of Base and 90" of Wall Cabinets with Corian Top w/ 16"x16"x8" Sink
- 10 Air Regulator / Compressed Air Outlet
- 11 Hose Bib
- 12 30 Gallon Electric Water Heater
- 13 12" Joist, R11 Insulation, 3/4" CDX and Painted 5/8" DW Ceilings
- 14 Painted 5/8" DW Ceiling on DW Grid
- 15 4" Vinyl Base (Typical)

- 3/8" Metal Studs, R11 Batt Insulation
- 5/8" Drywall Painted Partition

Interior Option #3 - 60' x 50'